

ISSUE #1



SPRING 2022 EDITION

# Batheaston Times

A community paper highlighting all the village news & events

Jubilee  
Party  
Plans!



LET'S DO STUFF  
TOGETHER!

SPRING  
EVENTS  
CALENDAR  
INSIDE!

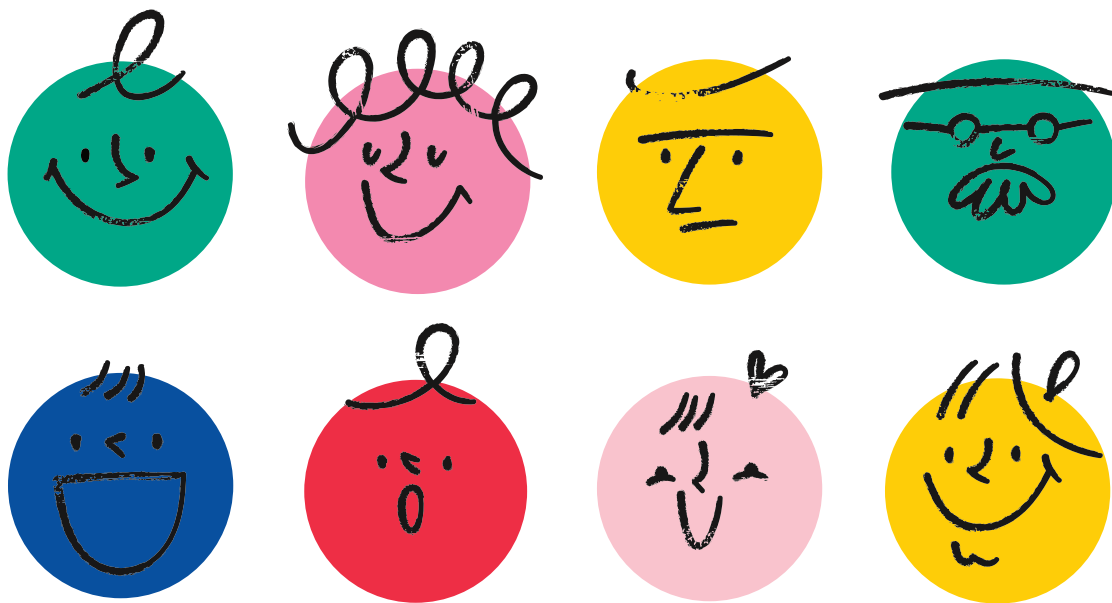
Local community groups are collaborating to create more events & support for families, kids, teenagers & the elderly people within the village.



Yes, this  
includes  
you ; )



PLUS: LATEST NEWS EVENTS FUNDRAISING VOLUNTEERING & MORE



# Something for everyone in

For 2022, Batheaston is looking to the community to celebrate, collaborate and communicate more. Here we kick-start a few ideas...

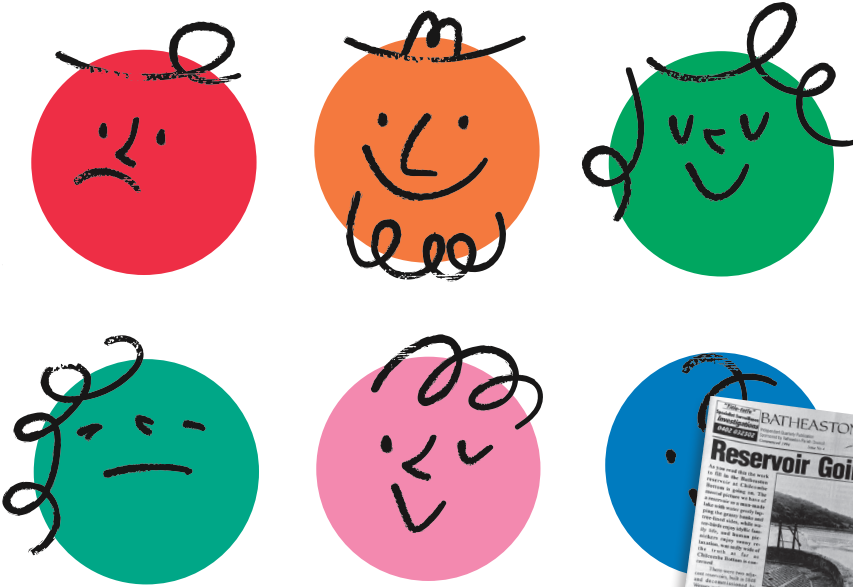


**Kevin Guy, Chair  
of Batheaston  
Leadership Board**

I am honoured to chair Batheaston's recently formed Leadership Board. This is a group of Batheaston organisations that have voluntarily come together for the benefit of residents of Batheaston, to rebuild our community post pandemic and post lockdown. The pandemic amplified the need for existing community organisations to deliver a wider range of events and activities, for better communication, and greater inclusion across our village for all residents.

With the help of every member of our local community, we aim to work together towards developing a resilient, self-sufficient and eco-friendly community across all age groups and organisations. Batheaston is an amazing place to live, and we have a host of talent within our community, but we also have large pockets of need. The role of this group is to bring together the existing organisations and expand their cooperation for the benefit of everyone in our great community.





# Batheaston!



**The group's immediate plan is to produce:**

- A quarterly newsletter with local news and event updates.
- A joint Jubilee Celebration
- Develop joint fundraising and volunteering campaigns to help us make the most of our resources

**The first official edition of the Batheaston Herald 1994/95**

This new newsletter, which is the first official one since the 1994/95 addition of the *Batheaston Herald*, includes the details and events of our member organisations. There are so many outstanding organisations within our community and this newsletter is designed to provide you with as much information about our village as possible.

We have an exciting year ahead with our new village hall opening and life beginning to return to normal. Life-changing work is taking place within our community for all ages and if you want to be part of that then please step forward to volunteer and support your local community organisations. Only together and united can we build a community fit for everyone.



**Cllr Kevin Guy**  
Chair of Batheaston Leadership Board



## Events

### MEADOWFEST

Sat 21st May

Come along and join in with all the fun and celebrations as we open up Mike's Meadow to the local community and raise money for the school. Please follow Friends of Batheaston School Facebook page for details

### QUEEN'S JUBILEE

Sun 5th June

There will be a street celebration organised by the BPC and other community groups to mark the Queen's Platinum Jubilee. We would welcome volunteers to help make this a great occasion for the whole village.

### NEW VILLAGE HALL POP-UP PUB

Fri 29th April 6-9pm

Held in the hall on the last Friday of each month between 6-9pm. Register at [villagepopuppub1@gmail.com](mailto:villagepopuppub1@gmail.com) to book tickets, and then pay on the evening. £15 will get you 3 drinks and nibbles.



# Spring events calendar

A round-up of some of the events that are on in the village this Spring

## CUBS

Scout Hut  
Every Monday  
6.30 - 8pm

Being a Cub is all about growing and learning in small but mighty ways. Cubs are young people aged 8-10½yrs. We meet on Mondays from 6.30-8 pm at our Scout Hut School Lane Batheaston.

[23rdbathscouts.org/cubs/](http://23rdbathscouts.org/cubs/)

## GB FOOTBALL CLUB

Every Saturday 9-11am

Fun football sessions for all children that are keen to join us. It's for girls and boys aged between 4 and 10. Main objectives are for the kids to have fun, get some exercise, and learn about teamwork and respect. Cash only on the day, £5 per 2 hour session.

[growbatheaston.co.uk/gbfc](http://growbatheaston.co.uk/gbfc)



## MUSIC WITH MUMMY

Scout Hut  
Every Monday  
10.15-10.45am & 11-11.30am

Call Kelsey Bovey  
07906 852552

[kelseybovey@gmail.com](mailto:kelseybovey@gmail.com)  
[www.musicwithmummy.co.uk/bath](http://www.musicwithmummy.co.uk/bath)

HAVE AN  
EVENT IDEA?  
[hello@batheaston-  
times.co.uk](mailto:hello@batheaston-times.co.uk)

## NETBALL FUN

Every Monday 7-8pm

The session starts with a warm up, followed by drills to hone those netball skills and then game time to put everything into play, followed by a nice stretch. We welcome beginners, returners, the curious and all those with trimmed nails!

<https://www.facebook.com/groups/273762401121966>

## QUEEN'S JUBILEE

5th June  
There will be a street celebration organized by the BPC and other community groups to mark the Queen's Platinum Jubilee. We would welcome volunteers to help make this a great occasion for the whole village. For all enquiries contact the Clerk, Richard Maccabee, at [clerk@batheaston-pc.gov.uk](mailto:clerk@batheaston-pc.gov.uk) and check [www.batheaston-pc.gov.uk/](http://www.batheaston-pc.gov.uk/) for more info.



## BATHEASTON ALL SORTS

Batheaston New Village Hall  
Every Tuesday 9.30-11am

We have a wide variety of fun and educational toys, a weekly craft activity, snack time, story time and music time. There is tea and fresh coffee for grown ups and home-made cake. The cost of the session is £2 per family/childminder. <https://www.facebook.com/groups/170815826444823>



### **KUNG FU BATH**

Scout Hut  
Every Wednesday  
5-11 years - 6-6.45pm  
12 upwards - 7-8.30pm

The Bath Kung Fu Academy is pleased to offer professional step by step instruction for men, women and children of all ages. We guide you from complete beginner to advanced practitioner and pride ourselves on being fun and friendly.  
[www.kungfubath.com/](http://www.kungfubath.com/)

### **AVON RFC JUNIORS**

Every Sunday  
London Road  
10-11.15am

Avonvale RFC is extremely proud to boast a thriving mini and junior rugby section, with over 140 boys and girls being coached and playing rugby from Under 6 right through the age groups.  
[www.avonvalerfc.co.uk/minis-juniors](http://www.avonvalerfc.co.uk/minis-juniors)

### **NEW VILLAGE HALL POP-UP PUB**

Fri 29th April 6-9pm

A great way to meet old friends and make new ones across the village. Held in the hall on the last Friday of each month between 6-9pm. Register at [villagepopuppub1@gmail.com](mailto:villagepopuppub1@gmail.com) to book tickets, and then pay on the evening. £15 will get you 3 drinks and nibbles.



### **BEAVERS & SCOUTS**

Scout Hut, every Thursday

**Beavers** (ages 6-8)  
6 - 7.15pm  
[23rdbathscouts.org/beavers/](http://23rdbathscouts.org/beavers/)

**Scouts** (ages 10.5-14)  
7.30 - 9pm  
[23rdbathscouts.org/scouts/](http://23rdbathscouts.org/scouts/)

Activities include cooking, building, problem solving, hiking, camping and adventures.

### **MEADOWFEST**

Sat 21st May

Come along and join in with all the fun and celebrations as we open up Mike's Meadow to the local community and raise money for the school.

Please follow Friends of Batheaston School Facebook page for details of locations to purchase advance tickets.

### **BOXERCISE**

New Village Hall  
Every Tuesday  
6pm & 7.15pm

Batheaston Boxercise classes at 6pm and 7pm. Location in the new village hall, School Lane.

Contact Sarah Tyler  
[sarahjanetyler@icloud.com](mailto:sarahjanetyler@icloud.com)



### **COMMUNITY CAFÉ**

Every Wednesday  
10.30am-12.30pm

Penny's Pantry is a voluntary organisation that expands affordable food choice for local residents via local community organisations and events.

Our Community Café is open every Wednesday at the Rhymes Pavilion for everyone in the village.

### **WOODLAND FAMILY MORNINGS**

Last Saturday of each month 10.30am-12  
We believe that regular time outdoors, play and connection with nature are fundamental parts of education, at every stage, for every child and young person. Our mission is to inspire and enable positive outdoor experiences. In so doing, we encourage a greater appreciation of the natural environment.  
[www.creative-roots.org](http://www.creative-roots.org)

### **WALKING FOOTBALL**

Every Wednesday  
(Starts 20th April)  
5.30-6.30pm  
Rhymes Field

Are you looking to keep active and enjoy football at a slower pace? No booking required. All abilities welcome. Sessions aimed at over 50's. For further information email: [info@bathcityfoundation.org](mailto:info@bathcityfoundation.org)



Full events  
listing launching  
online soon!

# New Village Hall

Our fabulous new village hall is up and running!

CONTACT US  
TO MAKE AN  
INITIAL ENQUIRY.



It's wonderful to have officially opened after all the hard work of designing, approving, building, fundraising and kitting out the new village hall. It's been quite a journey to replace the much-loved old hall, and now it's time to crack on and start enjoying ourselves in the new one! It really is a special building that will give us decades of scope for activities and events big and small, making Batheaston an even better place to be. The design is flexible and modern, built to an exacting and sustainable spec, with a high-ceilinged main hall, two sizeable meeting rooms plus the well-equipped kitchen. Take a look at the website [www.batheastonhall.org](http://www.batheastonhall.org) for the classes and events already underway: boxercise, toddlers group, choir, book group, art lectures and more. The first children's party with a bouncy castle was a hit, and wedding receptions are being booked too. The meeting rooms are ideal as a venue for community or business use: meetings, training days, workshops

or seminars. The ethos is very much that it's a building for all of us, so if you want to run a class, activity or event just contact us via the website. We're working with other organisations across Batheaston to see how best to develop new projects or restart activities that used to happen in the old hall and across the village.

Commercial hire income will help with upkeep, and subsidise community events. Already a group of volunteers has stepped up to help carry on fundraising, starting with the very popular monthly Pop-up Pub.

It's a testament to the spirit of Batheaston that so many of us in the village worked together as volunteers, donors and fundraisers, to make this wonderful new hall possible for everyone to enjoy.

**Glenys Adams, Bookings Manager**  
Email: [glenysadams@gmail.com](mailto:glenysadams@gmail.com)  
Tel: 07968 293083

## Events

**POP-UP PUB**  
Last Friday of the month, 6-9pm  
A great way to meet old friends and make new ones across the village. Held in the hall on the last Friday of each month. Register at [villagepopuppub1@gmail.com](mailto:villagepopuppub1@gmail.com) with how many tickets you want, and then pay on the evening. £15 will get you 3 drinks, nibbles and as the profit is all donated to the hall, it's win-win all round!

**SOLSBURY COMMUNITY CHOIR**  
Monday Evenings  
A new, friendly mixed choir, welcoming all singing abilities, with the emphasis on fun. There's no need to be able to read music. Starting Monday evenings from 7th March at 7.30pm. For more information visit [www.solsburysings.co.uk](http://www.solsburysings.co.uk).

**AERO-TONE PILATES**  
Monday 6-7pm  
Jane Braham  
07866 604341

**BOXERCISE**  
Tues 6-7pm & 7.15-8.15pm  
Contact Sarah Tyler [sarahjanetyler@icloud.com](mailto:sarahjanetyler@icloud.com)



# Batheaston Primary School

We strive to provide our children with the best opportunities and experiences to enhance their educational journey.

**H**ere at Batheaston, we pride ourselves on being a warm, friendly and happy place where children thrive on the belief that their dreams and aspirations can be achieved. Through our 5C's of Communication, Collaboration, Compassion, Critical Thinking and Creativity, we strive to provide our children with the best opportunities and experiences to enhance their educational journey.

Our curriculum is rooted in the distinctive Christian culture of our school which is inclusive and welcomes each child as a unique individual. We place a strong emphasis on our school Christian values to ensure children are provided with opportunities that embrace their spiritual, moral, social and cultural development. We set high expectations for children's behaviour and attitudes towards their learning.

We love to develop children's curiosity and place much emphasis on listening and responding to our children's voices. We are extremely lucky to have extensive outdoor space and we use this creatively

to take our learning outdoors to explore the natural world. We endeavour to adapt our curriculum so that every child, regardless of additional learning needs and disabilities, is able to become the best version of themselves and fulfil their dreams.

We pride ourselves on excellent teaching and learning throughout our school which provides children with opportunities to communicate, collaborate, feel safe, take risks and experiment whilst contributing to their own learning journey. All the staff team work hard to prepare our children for life in modern Britain through encouraging a good understanding of our British values and by placing a strong emphasis on Children's mental health and wellbeing.

Take a look at our website homepage - Batheaston Primary School to learn more about our school. You can also keep up to date with what the children are learning in school by following our twitter feed: @Batheastonpri.

**Sally Jefferies** Head Teacher,  
Batheaston Church School



## Events

### MEADOWFEST

Sat 21st May  
Come along and join in with all the fun and celebrations as we open up Mike's Meadow to the local community and raise money for the school.

### JUBILEE DAY

Friday 27th May  
Put on your glad rags and dress up as a royal as we celebrate the Queen's Jubilee.

**FOLLOW US  
ON TWITTER**  
@BatheastonPri



# Grow Batheaston

Working together from the ground up



**W**e are about empowering ourselves, our children and each other to create a greener, more sustainable way of life in our local area.

**We aim to:**

- Strengthen Community
- Create Food Security
- Encourage Biodiversity
- Promote Sustainable Living

We believe that doing these things will strengthen local connections and will have the ability to raise the standard of living for us all and bring health and wealth to our community.

We have lots of exciting plans but we'd also love to hear your ideas for our wonderful village.

Grow Batheaston is in the process of becoming a charity, we have a number of groups and activities established and more planned,

here's a quick snapshot:

- GBFC Junior Football Club
- Netball Fun and Fitness
- Walking Football
- Bee Club
- Wildlife Club
- Wellbeing Club
- Growers' Club
- We're creating an edible Food Forest Garden in the back of the Secret Garden
- Regular community planting sessions open to any residents that want to volunteer
- GB Juniors
- Hen Club
- A series of Pop-Up Markets
- Batheaston Art Trail

Young people - this year the funds we raise from being a nominated Co-op community cause will be spent on 14 to 21 year olds. So we'd love to hear from you, it could be a pop-up event or a project you would like to start or be involved in.

## Events

**FOOTBALL CLUB**

Every Saturday  
9-11am  
Rhymes Field

**NETBALL CLUB**

Every Monday  
7-8pm  
Court near the playground

**WALKING FOOTBALL**

Every Wednesday  
(Starts 20th April)  
5.30-6.30pm  
Rhymes Field

**COMMUNITY PLANTING**

10am-12noon the second Saturday and last Sunday of each month, and 9-11am each Wednesday

**POP-UP MARKET**

Saturday 18th June  
Riverside car park  
9am-12noon

**ART TRAIL 2022**

If you're a local artist and would like to get involved in this year's Art Trail or would like to join any of our groups & clubs, or volunteer, or need help setting up something new in the village then we'd love to hear from you.

**CONTACT US**  
JOIN A CLUB  
OR VOLUNTEER!

Email: [hello@growbatheaston.co.uk](mailto:hello@growbatheaston.co.uk)  
Website: [www.growbatheaston.co.uk](http://www.growbatheaston.co.uk)  
[twitter.com/growbatheaston](https://twitter.com/growbatheaston)  
[instagram.com/growbatheaston/](https://instagram.com/growbatheaston/)  
[facebook.com/growbatheaston/](https://facebook.com/growbatheaston/)



# St John's Church

If you live in Batheaston, then this is YOUR church, and we'd like you to take advantage of that fact, and continue to support it.

**W**ith the closure of other churches in the village, we are the only church open in Batheaston now, but we are more than willing to shoulder that responsibility, and offer facilities and the building to other denominations too .

I am delighted at this initiative to form a hub for communicating with each other and between groups in the village, and so I look forward to including our St John's page in future editions of this newsletter. A separate calendar will be published alongside the Newsletter.

Since I was appointed to this parish in December 2019 it has been very difficult to have a 'normal' church life – mostly due to the Covid pandemic. (I say "mostly" because in November 2020 I had a stroke which continues to limit my walking abilities). Now, however, we are able to get back to a more normal church life and the first big event will be the Annual Village Fete at the splendid new Patsy Townsend village hall and grounds on 25th of June, 2022. Of course, there are our weekly services at 10 o'clock every Sunday

to which everyone is invited and welcomed, and there is provision for primary children at every service. There are other services and events which will occur during the coming Easter season, and then there will be Life Events too. These will include weddings, baptisms and funerals and we want you to be aware that we are available for all of these. Just use the contact details below and/or check the noticeboards both on the roadside outside the church, and in the porch.

A 'vicar' is not the sole person to be in charge of an Anglican church, though he/she does lead the staff team and make final decisions. Along with myself as the ordained priest, the Team in Batheaston parish consists of two wardens, a Children and Youth Worker, and two Lay Readers, the latter being licensed by the diocese of Bath and Wells. We are all here to serve God by serving the village, so please get in touch!

*Every blessing to you all.*  
**Rev'd. Elizabeth Bennett**  
 Associate Priest  
 Batheaston with St Catherine

## Events

**HOPE AND HOMES FOR CHILDREN, UKRAINE APPEAL CHOIR CONCERT**  
 Sat April 23rd 7.30pm  
 The Silver Ring choir and local soprano Marian Stockton as a soloist. Tickets are £10.00 and are available in advance from Keith Masdin on 858 042 as well as on the door. All proceeds to go to Hope and Homes for the care of children in Ukraine.

**EASTER CRAFT MORNING**  
 Sat April 16th  
 An Easter craft morning at St John's from 10-11:30am for primary-aged children and families.

**FAMILY COMMUNION**  
 Sun April 17th  
 Easter Sunday will be a Family Communion at 10am and everyone is invited.

**CONTACT:**  
 REVELIZABETH1@GMAIL.COM

# Penny's Pantry & Community Café

Penny's Pantry (PP) is a not-for-profit organisation, run by local volunteers to expand affordable food choice and social activity for local residents.



**P**enny's Pantry PP was formed in September 2020 to give local residents improved access to healthy food during the COVID pandemic and lockdown.

**Why Penny's Pantry?**

- The Pantry is named after Penny Mimmack, a local district nurse who first set up a Wednesday coffee morning in 2001. This 'Coffee Shop' ran for over 20 years. It stopped just before lock-down. Penny knew the health benefits of bringing people together in an informal community setting. The Pantry has fully embraced her ideas.
- In June 2021, post-lockdown, we re-invented the Wednesday Café to keep this friendly tradition alive. We now make affordable food available at each weekly session. Volunteers and guests alike, all aim to support members of our community facing challenging circumstances, long or short term.
- At the Café you're likely to bump into helpful people such as our Ward Councillors, Home Energy Advisors, Community Police, our new Village Agent for Independent Living and more. Children are welcome too.

**Where the Magic Happens**

- The pantry and café run side-by-side each Wednesday morning at the Rhymes Pavilion BA17NW. Fairtrade tea, coffee and home-bakes can be found alongside friendly faces, all swapping the latest village news. New friendships, food and ideas are a regular feature of these little gatherings. It's a simple kind of magic.

**How it Works**

- Fresh and long-life food is donated by the Co-op supermarket, local growers, individual donors, school groups, local community organisations, charities and private companies.
- At Penny's Pantry, people make a small donation for the food they choose. Guests can also be referred by GPs, medical staff and other agencies. The food selection is a little unpredictable though it often inspires! Our recycling and composting process help reduce damage to our environment.
- New guests, volunteer drivers, bakers and hosts are always welcome.



## Events

**COMMUNITY CAFÉ**

Every Wednesday  
10.30am-12.30pm,  
The Rhymes  
Pavilion, Coalpit  
Road BA17NW

If you've any queries, get in touch via [pennyspantry@hotmail.com](mailto:pennyspantry@hotmail.com)

With special thanks to Batheaston Parish Council for enabling this health related initiative.



# Batheaston Parish Council



Batheaston Parish Council provides recreation and other facilities, maintains some of the local environment, and represents the community



**T**he Parish Council is responsible for many important aspects of our community. It owns various pieces of land throughout Batheaston, including the playground, the football pitch and the riverside including the secret garden. We have a handyman, Bert, who does an excellent job in keeping these areas tidy, especially in the summer months when the riverside is busy with paddleboarders! Bert is also kept very busy with many other tasks around the village. We are responsible for in excess of 30 streetlights, not all of them! Many of these lights, have been repaired and updated over the last year. We provide the hanging baskets and the lights on the High Street at Christmas. One of our official tasks is to review all planning applications prior to decisions being made by BANES. Members of the community can attend our meetings in order to comment on particular applications and the council then votes to approve or oppose the application. However, our views are only advisory and do not bind BANES. The Parish Council also works with CURO and other local organisations to improve the quality of life for Batheaston residents. We are currently updating the playground, the first set of repairs are nearly completed, and we have a working group involving other residents of Batheaston considering what else can be improved, what other pieces of equipment can be purchased and what else can be done to make the

playground as user friendly as possible. We have initiated a review of the car park, this is not straightforward as there are many issues to consider, do we charge or do we not charge, electric car charging points, car club etc. There are a number of options and we want the community to get involved and tell us what you want.

Over the next year we will be looking at ways to improve the Rhymes Pavilion, how about an all-weather football pitch? What about other uses for the toilet block, still a toilet but how about a pop up shop next door? Parish Councils are the lowest tier of government and all councillors are residents of the parish and councillors are not paid for their time. We are either elected or we are co-opted onto the council. All current councillors have been appointed by existing councillors, i.e. co-opted onto the Council.

At present we are only six councillors, we therefore have a number of vacancies and the more councillors we have, the more we can do for the community. We welcome applications from any resident who wants to contribute to the community with their ideas and their time. Batheaston is a fabulous place to live and as a Parish Council we want to work with as many of you as possible on ways to enhance Batheaston and our community.

For all enquiries contact the Clerk, Richard Maccabee, at [clerk@batheaston-pc.gov.uk](mailto:clerk@batheaston-pc.gov.uk). See our website for more information.

## Events

### COUNCIL MEETING

26th April, 7.15pm  
The Council meets every month, normally at 7.15pm on a Tuesday, at the Rhymes Pavilion. Residents are welcome to come along and hear what is said, and can make a contribution about things on the agenda.

### ANNUAL MEETING OF ELECTORS

10th May  
The Council co-ordinates the Annual Meeting of Electors, which is your meeting – an opportunity to discuss anything about the parish that you want to.

### QUEEN'S JUBILEE

5th June  
We are having a street party on 5 June to celebrate the Queen's Platinum Jubilee, all suggestions for entertainment very welcome. Are any of you in local bands, how about a battle of the bands? Do we have any jugglers, magicians or acrobats? Please contact either Richard Maccabee or Hannah Squire.

# Batheaston Youth Club



Our club offers opportunities for young people to enjoy sport and recreation activities and develop social skills within a supportive, purpose-built local community environment.

**GET IN TOUCH!  
BE A VOLUNTEER,  
RUN A WORKSHOP?  
OR HELP FUNDRAISE**  
01225 859 324



## Events

### **DROP-IN SESSIONS**

Tuesdays  
6.30-9pm

Thursday evening  
(term-time)  
6.30-9pm

**T**he BYC was established in the early 1960s by BANES as a safe weekly drop-in facility for young people.

Sixty years on, the Tuesday and Thursday evening sessions are still run by qualified Youth Workers during term-time for 11-to-21-year-olds and hot snacks and tuck shop treats are also available to buy. Over the years, young people have come in their droves to enjoy the range of activities on offer and today is no different. The club has a little kitchen, a chill-out area with sofas, a pool table, table tennis tables and a sports hall for basketball, football, karate, dance, arts and crafts and more.

### **Our achievements/adventures/successes**

Batheaston YC has been a haven of fun and learning for young people across the county for decades. The club is used by many outside clubs that hire the facilities on a weekly basis. Any individuals can attend these clubs by booking with the provider.

Today, our young people are feeling the effects of being cut off from their peers during lockdown. Home-schooling and the lack of direct social contact with friends and family have all taken their toll. As our young people get back into the swing of more formal education, the Youth Club offers a safe,

after-school alternative where young people can meet, play music and obtain confidential advice and support from qualified staff and/or a school nurse as required. Workshops cover a diverse range of topics including cookery, personal safety, and drugs and alcohol awareness. In the past, members have enjoyed trips and residential weekends, including rock climbing and ice-skating, all of which are on hold as we return to normal routines.

### **Future Plans**

Batheaston Youth Club has been an invaluable refuge for some of our most vulnerable young people for years. We want to make sure we continue to meet their needs in the future. The facility is available to local groups to hire and new volunteers are always invited to help support and expand what we offer. The sports hall area was purpose-built in 1995 with National Lottery and Sports Council funding. Today, our most pressing need is to raise £14,000 to repair the roof for future use.

*Please get in touch if you have any questions about our activities, would like to volunteer, deliver an appropriate workshop or support with fundraising on 01225 859 324 (Tuesday and Thursday evenings only). Your support will be warmly welcomed.*





# Batheaston Medical Centre

We try to be as accessible as possible to our patients and strive to provide the best quality of care from both from our clinical team and our administration team.

**W**e have been working hard to keep things running as smoothly as possible at the medical centre during the Covid pandemic. When we were asked if we would be able to offer a Covid vaccination service here at the medical centre we immediately said 'Yes'. As a group of practices working together, we have now delivered over 25,000 Covid vaccinations to the patients of Batheaston Medical Centre, Fairfield Park Health Centre, and Widcombe Surgery, as well as to those registered with practices outside of our boundaries. We are incredibly proud to have been able to offer this to our patients and hope to continue this service as and when further Covid vaccination clinics are required.

In 2021 two practices within Bath closed and we found our practice list size increased by over 1000 patients overnight. We were able to add additional GP and nursing capacity as well as increased administrative support to smoothly integrate the new patients into our practice.

As you may be aware, we have 3 GP Partners at the medical Centre. Dr Karen Prees is our Senior partner who has a particular interest in children's health and mental health, she is also a GP trainer and has been teaching new GPs for many years. Dr Philip Weldon is also a new GP trainer and has a keen interest in diabetes and medicines management. Dr Tim Hogg is our cancer lead for the practice, he also looks after patients who are in our local care homes.

We have 4 salaried GPs here at the practice, Dr Nicola Weldon, Dr Kirsty Watford, Dr Rosie Cain and Dr John Sykes. We also have Dr Sam Parsons who is with us as a GP locum, having recently joined us from Grosvenor Place surgery.

As we are a teaching practice we often have GP Trainees who have already qualified as doctors but are looking to spend time in Primary Care specialising to become GPs. We are currently hosting 2 GP trainees, Dr Lucy Austreng who is in her 1st year of GP training, and will be with us until August, and Dr Chucks Eluwah who is now in his 2nd year of GP training and will be with us until May.

The GPs are supported by our nursing team, Sister Dawn Hughes, Sister Bernice Currey, Sister Eleanor Davey, and by our Health Care Assistants, Andrea and Emma. We also have an administrative team who deal with incoming calls, referrals, and prescription requests to name but a few calls on their time.

We try to be as accessible as possible to our patients and strive to provide the best quality of care both from our clinical team and our administration team. We provide a variety of services ranging from GP consultations to NHS health checks, routine long-term condition monitoring, adult and child vaccinations and contraception.

For an extensive list of our services please check out our website: [www.batheastonmedicalcentre.com](http://www.batheastonmedicalcentre.com)



# Wern



## Meet Katy, your new Village Agent, working for WERN, the West of England Rural Network



### What is a Village Agent?

- Free confidential service providing advice and support for anyone over 18 years old
- Providing a connection between local people and the many voluntary and statutory organisations offering services and support
- Helps people maintain independence in their own home
- Independent from other services so we can provide the most appropriate advice for your individual circumstances
- Working in partnership with other charities and organisations with specialist knowledge and experience.
- Are you struggling as a young person, an older person or as a family and need advice and support?
- Do you have a problem that may be resolved by accessing the right professional services or agencies, but are unsure of where to begin?
- Are you an unpaid carer who looks after others (no matter how informally) and needs a little help and support?
- Have you had a recent crisis or change of circumstance and are struggling to know where to turn?

### How can your Village Agent help you?

- Do you live alone, are concerned about something that may need attention but have no one to turn to?

### How can you contact me?

Call 01275 333700, leave your details and I will call you back.

Email me [katy@wern.org.uk](mailto:katy@wern.org.uk)

*\* All conversations are treated with the strictest confidentiality \**



**CONTACT**  
[katy@wern.org.uk](mailto:katy@wern.org.uk)

Photo credit: National Trust Images & James Dobson.



# National Trust

The National Trust is delighted to announce the creation of a ‘green corridor’ at Bathampton Meadows, linking the historic city centre to surrounding countryside.

**F**ollowing the transfer of this wedge of land – 15.58 hectares of farmland and 24.66 hectares from the local council – the land is now protected without any threat of future development, to the benefit residents, visitors and nature. We have ambitions to create additional pathways on the land previously belonging to the council, and nature at the Meadows will be improved to encourage wildlife including foraging habitat for greater Horseshoe bats, wetland habitat for wading birds and increased numbers of wildflowers for pollinators.

We are launching a programme of community engagement to develop the future of the meadows in partnership with local people and key partners, in order to better understand what the meadows mean to people and develop plans on how the land can better support nature habitats and access. We want to hear why the Meadows are special to you and your ideas for making them even better. There will be conversations, volunteering opportunities and more drop-in events coming soon – we will share the details here and on [nationaltrust.org.uk/bathampton-meadows](https://nationaltrust.org.uk/bathampton-meadows).



*‘We’re really excited to finally be able to announce this project as it will make it possible for the 100,000 residents of Bath and thousands of visitors each year to head out of the city to enjoy the countryside.’*

Tom Boden  
General Manager for  
the National Trust’s  
Bath properties

**GET IN TOUCH**  
email: [bathskyline@nationaltrust.org.uk](mailto:bathskyline@nationaltrust.org.uk)

# Calling all volunteers!

Our local school, church, youth club, scouts group, charitable organisations and clubs need you to help our community grow.



We need volunteer drivers, social media gurus, web designers, cooks, bakers, event organisers, fundraisers, hosts, workshop organisers and more.

If you'd like to get involved, please get in touch:  
[hello@batheastontimes.co.uk](mailto:hello@batheastontimes.co.uk)

For a Brilliant and Resilient Future.  
Let's Grow Batheaston Together.



**Batheaston Times**

Website  
coming  
soon!